

Technical Data

RoHS

Panel connector



Cable connector



Coupler connector



Panel connector, cable connector and coupler connector

rectangular housing

Locking

screw up the knurled ring on the cable connector 1/6 of a turn on the panel connector barrel, for frequent locking and unlocking

Protection

IP 50 to IP 54 with conexil in the housing, flat-gasket for panel connector

Contacts

3 to 27 contacts \varnothing 1,6 mm and \varnothing 2,4 mm, crimp or solder removable contacts

Max. current

15 A \varnothing 1,6 mm and 30 A \varnothing 2,4 mm max.

Mechanical endurance

1000 locking and mating cycles

Contact resistance between pin and socket

$< 0,0015 \Omega$ 1,6 mm – $< 0,0010 \Omega$ 2,4 mm

Breakdown voltage

> 2500 Volts (RMS)

Insulation resistance

> 5000 M Ω

Operating temperature

-40 °C to +100 °C (500 hours at +125 °C)

Materials

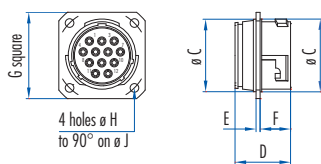
Nickel-plated light alloy, gold-plated brass contacts, neoprene insert

Max. conductor cross-section

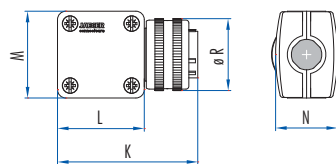
1,93 mm² \varnothing 1,6 mm – 3,18 mm² \varnothing 2,4 mm

Dimensional Data

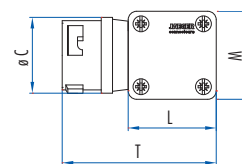
Panel connector



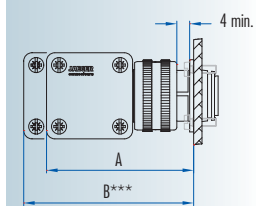
Cable connector



Coupler connector



Cable connector – Panel connector assembly



Housing	\varnothing mm	Number of Contacts	Assembly		Panel connector							Cable connector and Coupler connector						
			A	B	\varnothing C	D	E	F	G	\varnothing H	\varnothing J	K	L	M	N	\varnothing R	T	
1	1,6	3-4-7	54	63	21	20,5	1,5	11,5	27	3,2	28	50	32,2	32,2	20,2	25	50,3	
1	2,4	3-4	54	63	21	20,5	1,5	11,5	27	3,2	28	50	32,2	32,2	20,2	25	50,3	
2	1,6	12	58	67	27	20,5	1,5	11,5	32	3,2	34	54	36,4	36,4	23,5	32,5	54,2	
2	2,4	7	58	67	27	20,5	1,5	11,5	32	3,2	34	54	36,4	36,4	23,5	32,5	54,2	
3	1,6	19-27	66	75	39	23	2	11,5	43	4,2	48	61	42,6	47,6	31,3	44	62,1	
3	2,4	12	66	75	39	23	2	11,5	43	4,2	48	61	42,6	47,6	31,3	44	62,1	

*** B: minimum disconnection distance

Part Number

Housing	1	1	1	2	3	3	1	1	2	3
Number of Contacts	3	4	7	12	19	27	3	4	7	12
L \varnothing mm	1,6	1,6	1,6	1,6	1,6	1,6	2,4	2,4	2,4	2,4

Male panel connectors – Female cable connectors – Male coupler connectors

Square male panel connector	630 603 006	630 604 006	630 607 006	630 612 006	630 619 006	630 627 006	630 803 006	630 804 006	630 807 006	630 812 006
Female cable connector	632 603 006	632 604 006	632 607 006	632 612 006	632 619 006	632 627 006	632 803 006	632 804 006	632 807 006	632 812 006
Male coupler connector	633 603 006	633 604 006	633 607 006	633 612 006	633 619 006	633 627 006	633 803 006	633 804 006	633 807 006	633 812 006
Type 3 cable clamp	630 135 006	630 135 006	630 135 006	630 138 006	630 155 006	630 155 006	630 135 006	532 135 006	630 138 006	630 155 006
Flat-Gasket for panel connector (pack of 10)	536 945 006	536 945 006	536 945 006	536 946 006	536 947 006	536 947 006	536 945 006	536 945 006	536 946 006	536 947 006
Protective cap for panel connector	630 720 006	630 720 006	630 720 006	536 845 006	536 846 006	536 846 006	630 720 006	630 720 006	536 845 006	536 846 006
Protective cap for cable connector	632 720 006	632 720 006	632 720 006	532 214 006	532 218 006	532 218 006	632 720 006	632 720 006	532 214 006	532 218 006

Crimp tool with positioner 579 481 006

Tool for insertion and removing contacts \varnothing 1,6 mm 577 454 006, \varnothing 2,4 mm 577 458 006

Female panel connectors – Male cable connectors – Female coupler connectors

Square female panel connector	630 703 006	630 704 006	630 707 006	630 712 006	630 719 006	630 727 006	630 903 006	630 904 006	630 907 006	630 912 006
Male cable connector	632 703 006	632 704 006	632 707 006	632 712 006	632 719 006	632 727 006	632 903 006	632 904 006	632 907 006	632 912 006
Female coupler connector	633 703 006	633 704 006	633 707 006	633 712 006	633 719 006	633 727 006	633 903 006	633 904 006	633 907 006	633 912 006
Type 3 cable clamp	630 135 006	630 135 006	630 135 006	630 138 006	630 155 006	630 155 006	630 135 006	532 135 006	630 138 006	630 155 006
Flat-Gasket for panel connector (pack of 10)	536 945 006	536 945 006	536 945 006	536 946 006	536 947 006	536 947 006	536 945 006	536 945 006	536 946 006	536 947 006
Protective cap for panel connector	630 720 006	630 720 006	630 720 006	536 845 006	536 846 006	536 846 006	630 720 006	630 720 006	536 845 006	536 846 006
Protective cap for cable connector	632 720 006	632 720 006	632 720 006	532 214 006	532 218 006	532 218 006	632 720 006	632 720 006	532 214 006	532 218 006

Crimp tool with positioner 579 481 006

Tool for insertion and removing contacts \varnothing 1,6 mm 577 454 006, \varnothing 2,4 mm 577 458 006

- Square panel connectors are also of the „Industrial Waterproof“ type. See page 64.
- Contact No. 1, which makes the electrical connection before the other contacts and disconnects it after their separation, can be used as a ground contact.
If this contact is connected to the housing ground, insert the jumper provided for this purpose at the rear of the two parts of the connector, between the housing and the ground contact.
- Sealable tamper-evident connectors for housings 1 and 2. See: Accessories.
- **Important:** All the contacts must be mounted in the insert using our tool.
- For assembly, wiring, panel connector installation and contact arrangement instructions, see: Technical guides;
- Other accessories, see: Accessories.
- Polarisation: Polarisation systems are available to prevent incorrect connection between identical connectors (same series and same contact arrangement). See: Technical guides;
- All connectors are delivered with their contacts.
- Thermocouple contacts can be fitted. See: Accessories.

Technical Data

RoHS

Panel connector



Cable connector



Coupler connector



Panel connector, cable connector and coupler connector

circular housing

Locking

screw up the knurled ring on the cable connector 1/6 of a turn on the panel connector barrel, for frequent locking and unlocking

Protection

IP 65 with flat-gasket for panel connector

Contacts

3 to 27 contacts \varnothing 1,6 mm and \varnothing 2,4 mm, crimp or solder removable contacts

Max. current

15 A \varnothing 1,6 mm and 30 A \varnothing 2,4 mm max.

Mechanical endurance

1000 locking and mating cycles

Contact resistance between pin and socket

$< 0,0015 \Omega$ 1,6 mm – $< 0,0010 \Omega$ 2,4 mm

Breakdown voltage

> 2500 Volts (RMS)

Insulation resistance

> 5000 M Ω

Operating temperature

-40 °C to +100 °C (500 hours at +125 °C)

Materials

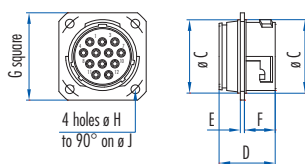
Nickel-plated light alloy, gold-plated brass contacts, neoprene insert

Max. conductor cross-section

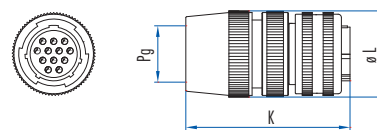
1,93 mm² \varnothing 1,6 mm – 3,18 mm² \varnothing 2,4 mm

Dimensional Data

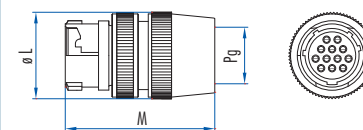
Panel connector



Cable connector

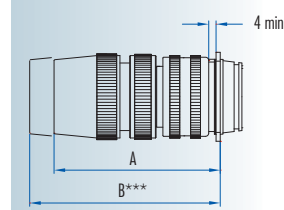


Coupler connector



Housing	ø mm	Number of Contacts	Assembly		Panel connector							Cable connector and Coupler connector			
			A	B	ø C	D	E	F	G	ø H	ø J	K	L	PG	M
1	1,6	3-4-7	53,5	70	21	20,5	1,5	11,5	27	3,2	28	42	26	11	52
1	2,4	3-4	53,5	70	21	20,5	1,5	11,5	27	3,2	28	42	26	11	52
2	1,6	12	63,5	82,5	27	20,5	1,5	11,5	32	3,2	34	59,5	34	16	59
2	2,4	7	63,5	82,5	27	20,5	1,5	11,5	32	3,2	34	59,5	34	16	59
3	1,6	19-27	72,5	100	39	23	2	11,5	43	4,2	48	68,5	44	21	65
3	2,4	12	72,5	100	39	23	2	11,5	43	4,2	48	68,5	44	21	65

Cable connector – Panel connector assembly



*** B: minimum disconnection distance

Part Number

Housing	1	1	1	2	3	3	1	1	2	3
Number of Contacts	3	4	7	12	19	27	3	4	7	12
L \varnothing mm	1,6	1,6	1,6	1,6	1,6	1,6	2,4	2,4	2,4	2,4

Male panel connectors – Female cable connectors – Male coupler connectors

Square male panel connector	630 603 006	630 604 006	630 607 006	630 612 006	630 619 006	630 627 006	630 803 006	630 804 006	630 807 006	630 812 006
Female cable connector	638 603 006	638 604 006	638 607 006	638 612 006	638 619 006	638 627 006	639 603 006	639 604 006	639 607 006	639 612 006
Male coupler connector	638 753 006	638 754 006	638 757 006	638 762 006	638 769 006	638 777 006	639 753 006	639 754 006	639 757 006	
PG	PG 11	PG 11	PG 11	PG 16	PG 21	PG 21	PG 11	PG 11	PG 16	PG 21
Cable clamps	633 421 006	633 421 006	633 421 006	633 422 006	633 423 006	633 423 006	633 421 006	633 421 006	633 422 006	633 423 006
L Capacity of the cable clamp in mm	\varnothing 7–12	\varnothing 7–12	\varnothing 7–12	\varnothing 9–17	\varnothing 12,5–23	\varnothing 12,5–23	\varnothing 7–12	\varnothing 7–12	\varnothing 9–17	\varnothing 12,5–23
Flat-Gasket for panel connector (pack of 10)	536 945 006	536 945 006	536 945 006	536 946 006	536 947 006	536 947 006	536 945 006	536 945 006	536 946 006	536 947 006
Protective cap for panel connector	630 720 006	630 720 006	630 720 006	536 845 006	536 846 006	536 846 006	630 720 006	630 720 006	536 845 006	536 846 006

Crimp tool with positioner 579 481 006

Tool for insertion and removing contacts \varnothing 1,6 mm 577 454 006, \varnothing 2,4 mm 577 458 006

Female panel connectors – Male cable connectors – Female coupler connectors

Square female panel connector	630 703 006	630 704 006	630 707 006	630 712 006	630 719 006	630 727 006	630 903 006	630 904 006	630 907 006	630 912 006
Male cable connector	638 703 006	638 704 006	638 707 006	638 712 006	638 719 006	638 727 006	639 703 006	639 704 006	639 707 006	639 712 006
Female coupler connector	638 653 006	638 654 006	638 657 006	638 662 006	638 669 006	638 677 006	639 653 006	639 654 006	639 657 006	
PG	PG 11	PG 11	PG 11	PG 16	PG 21	PG 21	PG 11	PG 11	PG 16	PG 21
Cable clamps	633 421 006	633 421 006	633 421 006	633 422 006	633 423 006	633 423 006	633 421 006	633 421 006	633 422 006	633 423 006
L Capacity of the cable clamp in mm	\varnothing 7–12	\varnothing 7–12	\varnothing 7–12	\varnothing 9–17	\varnothing 12,5–23	\varnothing 12,5–23	\varnothing 7–12	\varnothing 7–12	\varnothing 9–17	\varnothing 12,5–23
Flat-Gasket for panel connector (pack of 10)	536 945 006	536 945 006	536 945 006	536 946 006	536 947 006	536 947 006	536 945 006	536 945 006	536 946 006	536 947 006
Protective cap for cable connector	632 725 006	632 725 006	632 725 006	632 726 006	632 728 006	632 728 006	632 725 006	632 725 006	632 726 006	632 728 006

Crimp tool with positioner 579 481 006

Tool for insertion and removing contacts \varnothing 1,6 mm 577 454 006, \varnothing 2,4 mm 577 458 006

- Square panel connectors are also of the „Industrial“ type. See page 62.
- Contact No. 1, which makes the electrical connection before the other contacts and disconnects it after their separation, can be used as a ground contact.
If this contact is connected to the housing ground, insert the jumper provided for this purpose at the rear of the two parts of the connector, between the housing and the ground contact.
- Moulded watertight rubber boots for cables are delivered with the connectors. They must be mounted in the cable connectors or coupler connector.
- Boots for wire-to-wire cables and assemblies are available on request.
- Other sizes of PG available. Consult us.
- **Important:** All the contacts must be mounted in the insert using our tool.
- For assembly, wiring, panel connector installation and contact arrangement instructions, see: Technical guides;
- Other accessories, see: Accessories.
- Polarisation: Polarisation systems are available to prevent incorrect connection between identical connectors (same series and same contact arrangement). See: Technical guides;
- All connectors are delivered with their contacts.
- Thermocouple contacts can be fitted. See: Accessories.
- Available in a waterproof high-performance version. Consult us.

Technical Data

Panel connector



Cable connector



Coupler connector



Panel connector, cable connector
and coupler connector

rectangular housing

Locking

screw up the knurled ring on the cable connector 1/6 of a turn on the panel connector barrel,
for frequent locking and unlocking

Protection

IP 50 to IP 54 with conexil in the housing, flat-gasket for panel connector

Contacts

3 to 27 contacts \varnothing 1,6 mm crimp or solder removable contacts

Max. current

15 A \varnothing 1,6 mm

Mechanical endurance

1000 locking and mating cycles

Contact resistance between pin and socket

< 0,0015 Ω 1,6 mm

Breakdown voltage

at 20 °C, at sea-level > 2500 Volts (RMS)

Insulation resistance

> 5000 M Ω

Operating temperature

-55 °C to +200 °C (500 hours at +200 °C)

Materials

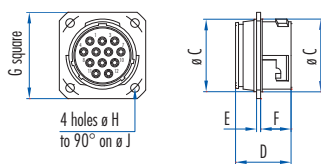
Light alloy with olive-green cadmium surface treatment, gold-plated brass contacts, silicon insert

Max. conductor cross-section

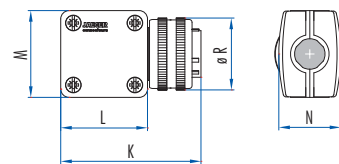
1,93 mm² \varnothing 1,6 mm

Dimensional Data

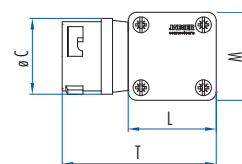
Panel connector



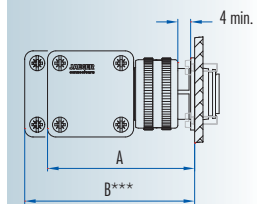
Cable connector



Coupler connector



Cable connector – Panel connector assembly



Housing	Number of Contacts	Assembly		Panel connector							Cable connector and Coupler connector						
		A	B	\varnothing C	D	E	F	G	\varnothing H	\varnothing J	K	L	M	N	\varnothing R	T	
1	3-4-7	54	63	21	20,5	1,5	11,5	27	3,2	28	50	32,2	32,2	20,2	25	50,3	
2	12	58	67	27	20,5	1,5	11,5	32	3,2	34	54	36,4	36,4	23,5	32,5	54,2	
3	19-27	66	75	39	23	2	11,5	43	4,2	48	61	42,6	74,6	31,3	44	62,1	

*** B: minimum disconnection distance

Part Number

Housing	1	1	1	2	3	3
Number of Contacts ø 1,6 mm	3	4	7	12	19	27

Male panel connectors – Female cable connectors – Male coupler connectors

Square male panel connector	630 603 256	630 604 256	630 607 256	630 612 256		
Female cable connector	632 603 256	632 604 256	632 607 256	632 612 256		
Male coupler connector	633 603 256	633 604 256	633 607 256	633 612 256		
Type 3 cable clamp	630 135 256	630 135 256	630 135 256	630 138 256		
Flat-Gasket for panel connector (pack of 10)	536 945 026	536 945 026	536 945 026	536 946 026		
Protective cap for panel connector	630 720 256	630 720 256	630 720 256	536 845 256		
Protective cap for cable connector	632 720 256	632 720 256	632 720 256	632 726 256		

Crimp tool with positioner 579 481 006

Tool for insertion and removing contacts ø 1,6 mm 577 454 006

Female panel connectors – Male cable connectors – Female coupler connectors

Square female panel connector	630 703 256	630 704 256	630 707 256	630 712 256	630 719 256	630 727 256
Male cable connector	632 703 256	632 704 256	632 707 256	632 712 256	632 719 256	632 727 256
Female coupler connector	633 703 256	633 704 256	633 707 256	633 712 256		
Type 3 cable clamp	630 135 256	630 135 256	630 135 256	630 138 256		
Flat-Gasket for panel connector (pack of 10)	536 945 026	536 945 026	536 945 026	536 946 026		
Protective cap for panel connector	630 720 256	630 720 256	630 720 256	536 845 256	536 846 256	536 846 256
Protective cap for cable connector	632 720 256	632 720 256	632 720 256	632 726 256		

Crimp tool with positioner 579 481 006

Tool for insertion and removing contacts ø 1,6 mm 577 454 006

- Contact No. 1, which makes the electrical connection before the other contacts and disconnects it after their separation can be used as a ground contact.
If this contact is connected to the housing ground, insert the jumper provided for this purpose at the rear of the two parts of the connector between the housing and the ground contact.
- Sealable tamper-evident connectors for housings 1 and 2. See: Accessories.
- **Important:** All the contacts must be mounted in the insert using our tool.
- For assembly, wiring, panel connector installation and contact arrangement instructions, see: Technical guides;
- Other accessories, see: Accessories.
- Polarisation: Polarisation systems are available to prevent incorrect connection between identical connectors (same series and same contact arrangement). See: Technical guides;
- All connectors are delivered with their contacts.
- Thermocouple contacts can be fitted. See: Accessories.
- Available in a waterproof high-performance version. Consult us.

Technical Data

RoHS

Panel connector, cable connector
and coupler connector

Locking

Protection

Contacts

Max. current

Contact resistance between pin and socket

Breakdown voltage

Insulation resistance

Operating temperature

Materials

Max. conductor cross-section

Panel connector



Cable connector



rectangular housing (IP 50–54) or circular housing (IP 65)

screw up the knurled ring on the cable connector 1/6 of a turn on the panel connector barrel, for frequent locking and unlocking

IP 50 to IP 54 with conexit in the housing, flat-gasket for panel connector and IP 65 with flat-gasket for panel connector

17 contacts: 13 contacts \varnothing 1 mm and 4 contacts \varnothing 2,4 mm, crimp or solder removable contacts

7 A \varnothing 1 mm and 30 A \varnothing 2,4 mm

$< 0,0015 \Omega$ 1 mm – $< 0,0010 \Omega$ 2,4 mm

at 20 °C, at sea-level 13 contacts \varnothing 1 mm > 2500 Volts (RMS), 4 contacts \varnothing 2,4 mm > 2500 Volts (RMS)

$> 5000 M\Omega$

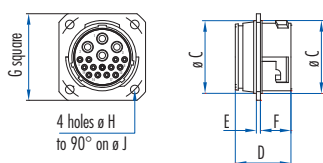
-40 °C to +100 °C (500 hours at +125 °C)

Nickel-plated light alloy, gold-plated brass contacts, neoprene insert

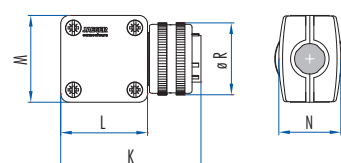
0,93 mm² \varnothing 1 mm – 3,18 mm² \varnothing 2,4 mm

Dimensional Data

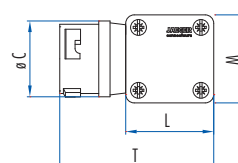
Panel connector



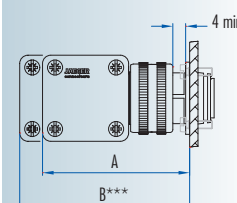
Cable connector



Coupler connector



Cable connector – Panel connector assembly






Housing	Number of Contacts	Assembly	Panel connector								Cable connector and Coupler connector					
			A	B	\varnothing C	D	E	F	G	\varnothing H	\varnothing J	K	L	M	N	\varnothing R
2	17	58	67	27	20,5	1,5	11,5	32	3,2	34	54	36,4	36,4	23,5	32,5	54,2

- Contact No. 1, which makes the electrical connection before the other contacts and disconnects it after their separation can be used as a ground contact. If this contact is connected to the housing ground, insert the jumper provided for this purpose at the rear of the two parts of the contactor between the housing and the ground contact.
- **Important:** All the contacts must be mounted in the insert using our tool.
- For assembly, wiring, panel connector installation and contact arrangement instructions, see: Technical guides;
- Other accessories, see: Accessories.
- All connectors are delivered with their contacts.

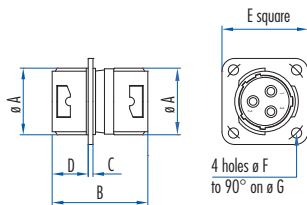
*** B: minimum disconnection distance

Part Number	
Housing	2
Number of Contacts	17
L ø 1 mm	13
L ø 2,4 mm	4
Rectangular housing IP 50–54: Male panel connector – Female cable connector – Male coupler connector	
IP	50-54
Square male panel connector	630 617 006
Female cable connector	632 617 006
Male coupler connector	
Type 3 cable clamp	630 138 006
Flat-Gasket for panel connector (pack of 10)	536 946 006
Protective cap for panel connector	536 845 006
Protective cap for cable connector	532 214 006
Crimp tool with positioner 579 481 006	
Tool for insertion and removing contacts ø 1 mm 597 104 206, ø 2,4 mm 577 458 006	
Rectangular housing IP 50–54: Female panel connector – Male cable connector – Female coupler connector	
IP	50-54
Square female panel connector	630 717 006
Male cable connector	632 717 006
Female coupler connector	
Type 3 cable clamp	630 138 006
Flat-Gasket for panel connector (pack of 10)	536 946 006
Protective cap for panel connector	536 845 006
Protective cap for cable connector	532 214 006
Crimp tool with positioner 579 481 006	
Tool for insertion and removing contacts ø 1 mm 597 104 206, ø 2,4 mm 577 458 006	
Circular housing IP 65: Male panel connector – Female cable connector – Male coupler connector	
IP	65
Square male panel connector	630 617 006
Female cable connector	PG 16 638 217 006
Male coupler connector	PG 16 638 417 006
Cable clamp	capacity: 9 mm min. – 17 mm max. 633 422 006
Flat-Gasket for panel connector (pack of 10)	536 946 006
Protective cap for panel connector	536 845 006
Protective cap for cable connector	632 726 006
Crimp tool with positioner 579 481 006	
Tool for insertion and removing contacts ø 1 mm 597 104 206, ø 2,4 mm 577 458 006	
Circular housing IP 65: Female panel connector – Male cable connector – Female coupler connector	
IP	65
Square female panel connector	630 717 006
Male cable connector	PG 16 638 317 006
Female coupler connector	PG 16 638 517 006
Type 3 cable clamp	capacity: 9 mm min. – 17 mm max. 633 422 006
Flat-Gasket for panel connector	536 946 006
Protective cap for panel connector	536 845 006
Protective cap for cable connector	632 726 006
Crimp tool with positioner 579 481 006	
Tool for insertion and removing contacts ø 1 mm 597 104 206, ø 2,4 mm 577 458 006	

Technical Data		Industrial Series	Industrial Waterproof Series
RoHS	Bulkhead connector	Cable connector	Cable connector
			
Bulkhead connector	male / female contacts		
Cable connector		rectangular housing	circular housing
Locking		screw up the knurled ring on the cable connector 1/6 of a turn on the panel connector barrel, for frequent locking and unlocking	
Protection	Depending on the associated cable connector	IP 50 to IP 54 with elastomer in the housing, flat-gasket for panel connector	IP 65 with flat-gasket for panel connector
Contacts	3, 4, 7 and 12 contacts \varnothing 1,6 mm, 3, 4 and 7 contacts \varnothing 2,4 mm, removable contacts	3, 4, 7 and 12 contacts \varnothing 1,6 mm, 3, 4 and 7 contacts \varnothing 2,4 mm, crimp or solder removable contacts	
Max. current	15 A \varnothing 1,6 mm, 30 A \varnothing 2,4 mm		
Contact resistance between pin and socket	< 0,0015 Ω \varnothing 1,6 mm – < 0,0010 Ω \varnothing 2,4 mm		
Breakdown voltage	at 20 °C, at sea-level: >2500 Volts (RMS)		
Insulation resistance	> 5000 M Ω		
Operating temperature		-40 °C to +100 °C (500 hours at +125 °C)	
Materials		Nickel-plated light alloy, gold-plated brass contacts, neoprene insert	
Max. conductor cross-section		1,93 mm ² \varnothing 1,6 mm – 3,18 mm ² \varnothing 2,4 mm	
Mechanical endurance	1 000 locking and mating cycles		

Dimensional Data

Bulkhead connector



Housing	Dimensions in mm							Weight in grams
	\varnothing A	B	C	D	E	\varnothing F	\varnothing G	
1	21	29	1,5	11,5	27	3,2	28	140
2	27	30	1,5	11,5	32	3,2	34	203

Part Number

Housing	1	1	1	2	1	1	2
Number of Contacts	3	4	7	12	3	4	7
L mm	1,6	1,6	1,6	1,6	2,4	2,4	2,4

Bulkhead connector

Bulkhead connector	632 503 006	632 504 006	632 507 006	632 512 006	632 553 006	632 554 006	632 557 006
Protective cap	630 720 006	630 720 006	630 720 006	536 845 006	630 720 006	630 720 006	536 845 006
Flat-Gasket for bulkhead connector (pack of 10)	536 945 006	536 945 006	536 945 006	536 946 006	536 945 006	536 945 006	536 946 006

The electrical connection is made using a cable connector from our „Industrial“ or „Industrial Waterproof“ Series. Select the most appropriate type of cable connector.

Industrial Series – Female cable connectors – Male cable connectors (see page 58)

Male cable connector	632 703 006	632 704 006	632 707 006	632 712 006	632 903 006	632 904 006	632 907 006
Female cable connector	632 603 006	632 604 006	632 607 006	632 612 006	632 803 006	632 804 006	632 807 006
Type 3 cable clamp	630 135 006	630 135 006	630 135 006	630 138 006	630 135 006	630 135 006	630 138 006
Protective cap for cable connector	632 720 006	632 720 006	632 720 006	532 214 006	632 720 006	632 720 006	532 214 006

Crimp tool with positioner 579 481 006

Tool for insertion and removing contacts ø 1,6 mm 577 454 006, ø 2,4 mm 577 458 006

Industrial Waterproof Series – Female cable connectors – Male cable connectors (see page 60)

Male cable connector	638 703 006	638 704 006	638 707 006	638 712 006	639 703 006	639 704 006	639 707 006
Female cable connector	638 603 006	638 604 006	638 607 006	638 612 006	639 603 006	639 604 006	639 607 006
Cable clamps	633 421 006	633 421 006	633 421 006	633 422 006	633 421 006	633 421 006	633 422 006
Protective cap for cable connector	632 725 006	632 725 006	632 725 006	632 726 006	632 725 006	632 725 006	632 726 006

Crimp tool with positioner 579 481 006

Tool for insertion and removing contacts ø 1,6 mm 577 454 006, ø 2,4 mm 577 458 006

- The bulkhead connector fitted with male / female contacts allows the installation of a leadthrough which can be disconnected on either side of the partition.
- Version (High-Performance) of the bulkhead connector available. Consult us.
- **Important:** All the contacts must be mounted in the insert using our tool.
- For assembly, wiring, panel connector installation and contact arrangement instructions, see: Technical guides;
- Other accessories, see: Accessories.
- All connectors are delivered with their contacts.