

Hermetic Series – Hermetic Standard: Panel connector attached by welding

Technical Data

RoHS

Male panel connector



Female cable connector



Female cable connector



Male panel connector

attached by welding

Cable connector

rectangular housing

circular housing

Locking

screw connection

Protection

Depending on the associated cable connector

IP 50 to IP 54 with elastomer in the housing,
flat-gasket for panel connector

IP 65 with flat-gasket for panel connector

Contacts

3 to 52 contacts \varnothing 2 mm, \varnothing 3 mm and / or \varnothing 4 mm, non-removable solder contacts

Max. current

7 A \varnothing 2 mm – 12 A \varnothing 3 mm – 20 A \varnothing 4 mm

Helium leak rate

$< 10^{-9}$ Atm.cm³/sec

Permissible constant pressure difference
between the two surfaces

50 bars, maximum test pressure: 150 bars

Contact resistance

< 4 m Ω \varnothing 2 mm – < 3 m Ω \varnothing 3 mm
– $< 1,5$ m Ω \varnothing 4 mm

Insulation resistance

> 10000 M Ω

Breakdown voltage between adjacent contacts

> 1500 Volts (RMS) at a pressure of
 ~ 100 Pa (according to Paschen's law)

Operating temperature

-50 °C to +125 °C (500 hours at +150 °C)

-40 °C to +100 °C (500 hours at +125 °C)

Materials

Gold-plated steel body, gold-plated Dilver P contacts,
sintered glass insulation between pins and body
guaranteeing excellent mechanical resistance

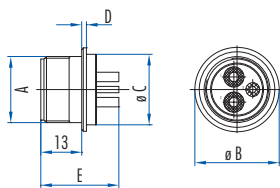
Nickel-plated light alloy,
silver-plated brass contacts,
silver-plated PBT insert, PBT + resin insert

Max. cross-section of soldered conductors

1,34 mm² \varnothing 2 mm (16AWG) – 3,18 mm² \varnothing 3 mm (12AWG) – 5,26 mm² \varnothing 4 mm (10 AWG)

Dimensional Data

Panel connector



Housing	Number of Contacts	Male panel connector				
		A	\varnothing B	\varnothing C	D	E
1	3-4-6	M 21	27	23	1,5	24
2	4	M 27	33	29	1,5	29
2	8-12	M 27	33	29	1,5	24
3	17	T 39	43	39	2	23,5
4	25	T 45	49	45	2	23,5
5	35-52	T 52	56	52	2	23,5

Hermetic Series – Hermetic Standard: Panel connector attached by welding

Part Number

Housing	1	1	1	2	2	2	3	4	5	5
Number of Contacts	3	4	6	4	8	12	17	25	35	52
L \varnothing 2 mm	1	4	6		6	12	15	23	33	52
L \varnothing 3 mm	2				2		2	2	2	
L \varnothing 4 mm				4						

Male panel connectors attached by welding

Circular male panel connector	536 203 006	536 204 006	536 206 006	536 214 006	536 208 006	536 212 006	536 217 006	536 225 006	536 235 006	536 252 006
Protective cap for panel connector	536 910 006	536 910 006	536 910 006	536 911 006	536 911 006	536 911 006	536 912 006	536 913 006	536 914 006	536 914 006

The electrical connection is made using a cable connector from our „Standard“ or „Waterproof“ Series. Select the most appropriate type of cable connector to suit your operating conditions.

Standard Series – Female cable connector (see page 10)




Female cable connector	042 953 006	043 085 006	042 954 006	530 763 006	042 955 006	042 956 006	038 382 006	042 977 006	042 990 006	530 703 006
Type 3 cable clamp	630 135 006	630 135 006	630 135 006	630 138 006	630 138 006	630 138 006	630 155 006	630 155 006	630 175 006	630 175 006
Protective cap for female cable connector	532 260 006	532 260 006	532 260 006	532 278 006	532 278 006	532 278 006	532 262 006	532 263 006	532 264 006	532 264 006

Waterproof Series – Female cable connector (see page 22)

Female cable connector + cable clamp, small outlet	532 401 006	532 402 006	532 403 006		532 404 006	532 405 006	532 406 006	532 407 006	532 408 006	530 713 006
L Capacity of the cable clamp in mm	\varnothing 7 – 10	\varnothing 7 – 10	\varnothing 7 – 10		\varnothing 9 – 13	\varnothing 9 – 13	\varnothing 12,5 – 17	\varnothing 12,5 – 17	\varnothing 16 – 23	\varnothing 16 – 23
Female cable connector + cable clamp, large outlet	532 411 006	532 412 006	532 413 006	530 773 006	532 414 006	532 415 006	532 416 006	532 417 006	532 418 006	530 714 006
L Capacity of the cable clamp in mm	\varnothing 9 – 12	\varnothing 9 – 12	\varnothing 9 – 12	\varnothing 12,5 – 17	\varnothing 12,5 – 17	\varnothing 12,5 – 17	\varnothing 16 – 23	\varnothing 16 – 23	\varnothing 22 – 32	\varnothing 22 – 32
Protective cap for female cable connector	532 270 006	532 270 006	532 270 006	532 271 006	532 271 006	532 271 006	532 262 006	532 268 006	532 269 006	532 269 006

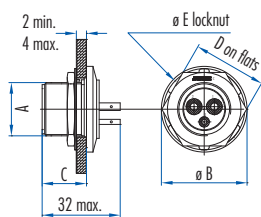
- The panel connectors can also be connected with the female cable connector from the Waterproof High-Performance PG Series, and the female cable connector from the Waterproof PG Series.
- Panel connector and conductors attached by tin soldering. Select the type of soldering according to the operating temperature. Avoid thermal shocks during soldering.
- For assembly, wiring, panel connector installation and contact arrangement instructions, see: Technical guides.
- Other accessories, see: Accessories.

Hermetic Series – Hermetic Standard: Panel connector attached by locknut

Technical Data		Standard Series	Waterproof Series
RoHS	Male panel connector	Female cable connector	Female cable connector
			
Male panel connector	attached by locknut	rectangular housing	circular housing
Cable connector			
Locking		screw connection	
Protection	Depending on the associated cable connector	IP 50 to IP 54 with elastomer in the housing, flat-gasket for panel connector	IP 65 with flat-gasket for panel connector
Contacts	3 to 52 contacts \varnothing 2 mm, \varnothing 3 mm and / or \varnothing 4 mm, non-removable solder contacts		
Max. current	7 A \varnothing 2 mm – 12 A \varnothing 3 mm – 20 A \varnothing 4 mm		
Helium leak rate	< 10^{-9} Atm.cm ³ /sec		
Permissible constant pressure difference between the two surfaces	50 bars, maximum test pressure: 150 bars		
Contact resistance	< 4 m Ω \varnothing 2 mm – < 3 m Ω \varnothing 3 mm – < 1,5 m Ω \varnothing 4 mm		
Insulation resistance	> 10000 M Ω		
Breakdown voltage between adjacent contacts	> 1500 Volts (RMS) at a pressure of ~ 100Pa (according to Paschen's law)		
Operating temperature	-25 °C to +100 °C (500 hours at +125 °C)		
Materials	316L stainless steel body, Dilver P contacts, sintered glass insulation between pins and body guaranteeing excellent mechanical resistance		
Max. cross-section of soldered conductors	1,34 mm ² \varnothing 2 mm (16AWG) – 3,18 mm ² \varnothing 3 mm (12AWG) – 5,26 mm ² \varnothing 4 mm (10AWG)		

Dimensional Data

Panel connector



Housing	Number of Contacts	Male panel connector				
		A	\varnothing B	C	D	E
1	3-4-6	M21	33,8	17,5	29	32
2	4-8-12	M27	39,8	17,5	35	38
3	17	T-39	56	24,5	50	-
4	25	T-45	62	24,5	60	-
5	35-52	T-52	69	24,5	65	-

Hermetic Series – Hermetic Standard: Panel connector attached by locknut

Part Number

Housing	1	1	1	2	2	2	3	4	5	5
Number of Contacts	3	4	6	4	8	12	17	25	35	52
L \varnothing 2 mm	1	4	6		6	12	15	23	33	52
L \varnothing 3 mm	2				2		2	2	2	
L \varnothing 4 mm				4						

Male panel connectors attached by locknut

Complete male panel connector*	536 403 006	536 404 006	536 406 006	536 414 006	536 408 006	536 412 006	536 417 006	536 425 006	536 435 006	536 452 006
Protective cap for panel connector	536 910 006	536 910 006	536 910 006	536 911 006	536 911 006	536 911 006	536 912 006	536 913 006	536 914 006	536 914 006
Accessory for replacement										
L Seal	536 440 006	536 440 006	536 440 006	536 441 006	536 441 006	536 441 006	536 442 006	536 451 006	536 454 006	536 454 006
L Nut	536 446 006	536 446 006	536 446 006	536 447 006	536 447 006	536 447 006	536 448 006	536 450 006	536 453 006	536 453 006
L Locknut	536 443 006	536 443 006	536 443 006	536 444 006	536 444 006	536 444 006				

The electrical connection is made using a cable connector from our „Standard“ or „Waterproof“ Series. Select the most appropriate type of cable connector to suit your operating conditions.

Standard Series – Female cable connector (see page 10)




Female cable connector	042 953 006	043 085 006	042 954 006	530 763 006	042 955 006	042 956 006	038 382 006	042 977 006	042 990 006	530 703 006
Type 3 cable clamp	630 135 006	630 135 006	630 135 006	630 138 006	630 138 006	630 138 006	630 155 006	630 155 006	630 175 006	630 175 006
Protective cap for female cable connector	532 260 006	532 260 006	532 260 006	532 278 006	532 278 006	532 278 006	532 262 006	532 263 006	532 264 006	532 264 006

Waterproof Series – Female cable connector (see page 22)

Female cable connector + cable clamp, small outlet	532 401 006	532 402 006	532 403 006		532 404 006	532 405 006	532 406 006	532 407 006	532 408 006	530 713 006
L Capacity of the cable clamp in mm	\varnothing 7 – 10	\varnothing 7 – 10	\varnothing 7 – 10		\varnothing 9 – 13	\varnothing 9 – 13	\varnothing 12,5 – 17	\varnothing 12,5 – 17	\varnothing 16 – 23	\varnothing 16 – 23
Female cable connector + cable clamp, large outlet	532 411 006	532 412 006	532 413 006	530 773 006	532 414 006	532 415 006	532 416 006	532 417 006	532 418 006	530 714 006
L Capacity of the cable clamp in mm	\varnothing 9 – 12	\varnothing 9 – 12	\varnothing 9 – 12	\varnothing 12,5 – 17	\varnothing 12,5 – 17	\varnothing 12,5 – 17	\varnothing 16 – 23	\varnothing 16 – 23	\varnothing 22 – 32	\varnothing 22 – 32
Protective cap for female cable connector	532 270 006	532 270 006	532 270 006	532 271 006	532 271 006	532 271 006	532 262 006	532 268 006	532 269 006	532 269 006

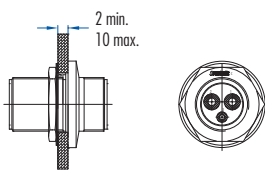
- The panel connectors can also be connected with the female cable connector from the Waterproof High-Performance PG Series, and the female cable connector from the Waterproof PG Series.
- * The complete panel connector includes: a threaded metal body, with an immobilisation pin, pins that are attached and insulated by sintered glass beads, a synthetic rubber O-ring, a fastening nut locked by a washer (housings 1 and 2).
- For assembly, wiring, panel connector installation and contact arrangement instructions, see: Technical guides.
- Other accessories, see: Accessories.

Hermetic Series – Hermetic Standard: Bulkhead connector attached by locknut

Technical Data		Standard Series	Waterproof Series
RoHS	 <p>Bulkhead connector Male → ← Male attached by locknut</p>	 <p>Female cable connector</p>	 <p>Female cable connector</p>
Male panel connector			
Cable connector		rectangular housing	circular housing
Locking		screw connection	
Protection	Depending on the associated cable connector	IP 50 to IP 54 with elastomer in the housing, flat-gasket for panel connector	IP 65 with flat-gasket for panel connector
Contacts		3 to 52 contacts ø 2 mm, ø 3 mm, non-removable solder contacts	
Max. current	7 A ø 2 mm – 12 A ø 3 mm		
Helium leak rate	< 10 ⁻⁹ Atm.cm ³ /sec		
Permissible constant pressure difference between the two surfaces	50 bars, maximum test pressure: 150 bars		
Contact resistance	> 5000 MΩ		
Insulation resistance	> 10000 MΩ		
Breakdown voltage between adjacent contacts	> 1500 Volts (RMS) at a pressure of ~ 100Pa (according to Paschen's law)		
Operating temperature	-25 °C to +100 °C (500 hours at +125 °C)	-40 °C to +100 °C (500 hours at +125 °C)	
Materials	316L stainless steel body, Dilver P contacts, sintered glass insulation between pins and body guaranteeing excellent mechanical resistance	Nickel-plated light alloy, silver-plated brass contacts, PBT insert except 4 mm diameter contacts which are gold-plated brass	
Max. cross-section of soldered conductors		1,34 mm ² ø 2 mm (16AWG) – 3,18 mm ² ø 3 mm (12AWG)	

Dimensional Data

Bulkhead connector



Housing	Number of Contacts	Bulkhead connector			
		A	B	C	D
1	3-6	M 21	33,8	23	23
2	12	M 27	39,8	23	23
3	17	T-39	56	24,5	24,5
4	25	T-45	62	24,5	24,5
5	35-52	T-52	69	24,5	24,5

Hermetic Series – Hermetic Standard: Bulkhead connector attached by locknut

Part Number

Housing	1	1	1	2	2	3	4	5	5
Number of Contacts	3	4	6	8	12	17	25	35	52
L \varnothing 2 mm	1	4	6	6	12	15	23	33	52
L \varnothing 3 mm	2			2		2	2	2	

Bulkhead connector male contacts attached by locknut

Complete male bulkhead connector*	533 103 006	533 104 006	533 106 006	533 108 006	533 112 006	533 117 006	533 125 006	533 135 006	533 152 006
Protective cap for panel connector	536 910 006	536 910 006	536 910 006	536 911 006	536 911 006	536 912 006	536 913 006	536 914 006	536 914 006
Accessory for replacement									
L Seal	536 440 006	536 440 006	536 440 006	536 441 006	536 441 006	536 442 006	536 451 006	536 454 006	536 454 006
L Nut	536 446 006	536 446 006	536 446 006	536 447 006	536 447 006	536 448 006	536 450 006	536 453 006	536 453 006
L Locknut	536 443 006	536 443 006	536 443 006	536 444 006	536 444 006				

The electrical connection is made using a cable connector from our „Standard“ or „Waterproof“ Series. Select the most appropriate type of cable connector to suit your operating conditions.

Standard Series – Female cable connector (see page 10)

Female cable connector	042 953 006	043 085 006	042 954 006	042 955 006	042 956 006	038 382 006	042 977 006	042 990 006	530 703 006
Type 3 cable clamp	630 135 006	630 135 006	630 135 006	630 138 006	630 138 006	630 155 006	630 155 006	630 175 006	630 175 006
Protective cap for female cable connector	532 260 006	532 260 006	532 260 006	532 278 006	532 278 006	532 262 006	532 263 006	532 264 006	532 264 006

Waterproof Series – Female cable connector (see page 22)




Female cable connector + cable clamp, small outlet	532 401 006	532 402 006	532 403 006	532 404 006	532 405 006	532 406 006	532 407 006	532 408 006	530 713 006
L Capacity of the cable clamp in mm	\varnothing 7–10	\varnothing 7–10	\varnothing 7–10	\varnothing 9–13	\varnothing 9–13	\varnothing 12,5–17	\varnothing 12,5–17	\varnothing 16–23	\varnothing 16–23
Female cable connector + cable clamp, large outlet	532 411 006	532 412 006	532 413 006	532 414 006	532 415 006	532 416 006	532 417 006	532 418 006	530 714 006
L Capacity of the cable clamp in mm	\varnothing 9–12	\varnothing 9–12	\varnothing 9–12	\varnothing 12,5–17	\varnothing 12,5–17	\varnothing 16–23	\varnothing 16–23	\varnothing 22–32	\varnothing 22–32
Protective cap for female cable connector	532 270 006	532 270 006	532 270 006	532 271 006	532 271 006	532 262 006	532 268 006	532 269 006	532 269 006

- The panel connectors can also be connected with the female cable connector from the Waterproof High-Performance PG Series, and the female cable connector from the Waterproof PG Series.

- * The complete bulkhead connector includes: a threaded metal body, with an immobilisation pin, pins that are attached and insulated by sintered glass beads, a synthetic rubber O-ring, a fastening nut locked by a washer (housings 1 and 2).

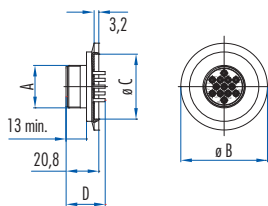
- For assembly, wiring, panel connector installation and contact arrangement instructions, see: Technical guides.

- Other accessories, see: Accessories.

Technical Data		Standard Series	Waterproof Series
RoHS	Male panel connector	Female cable connector	Female cable connector
			
Male panel connector	attachment by Pneurop collars or flanges	rectangular housing	circular housing
Cable connector			
Locking		screw connection	
Protection	Depending on the associated cable connector	IP 50 to IP 54 with elastomer in the housing, flat-gasket for panel connector	IP 65 with flat-gasket for panel connector
Contacts	3 to 52 contacts ø 2 mm, ø 3 mm and / or ø 4 mm, non-removable solder contacts		
Max. current	7A ø 2 mm – 12A ø 3 mm – 20A ø 4 mm		
Helium leak rate	< 10 ⁻⁹ Atm. cm ³ /sec		
Permissible constant pressure difference between the two surfaces	50 bars, maximum test pressure: 150 bars		
Contact resistance	< 4 mΩ ø 2 mm – < 3 mΩ ø 3 mm – < 1,5 mΩ ø 4 mm		
Insulation resistance	> 10000 MΩ		
Breakdown voltage between adjacent contacts	> 1500 Volts (RMS) at a pressure of ~ 100Pa (according to Paschen's law)		
Operating temperature	-25 °C to +100 °C (500 hours at +125 °C)		
Materials	316L stainless steel body, Dilver P contacts, sintered glass insulation between pins and body guaranteeing excellent mechanical resistance		
Max. cross-section of soldered conductors	1,34 mm ² ø 2 mm (16AWG) – 3,18 mm ² ø 3 mm (12AWG) – 5,26 mm ² ø 4 mm (10AWG)		

Dimensional Data (in accordance with NF E 29 – 724)

Panel connector



Housing	Number of Contacts	Male panel connector			
		A	ø B	ø C	D
1	3-4-6	M 21	30	17,2	
2	4	M 27	40	26,2	
2	8-12	M 27	55	41,2	
3	17	Tr 39	55	41,2	
4	25	Tr 45	75	52,2	
5	35-52	Tr 52	75	52,2	

Part Number

Housing	1	1	1	2	2	2	3	4	5	5
Number of Contacts	3	4	6	4	8	12	17	25	35	52
L \varnothing 2 mm	1	4	6		6	12	15	23	33	52
L \varnothing 3 mm	2				2		2	2	2	
L \varnothing 4 mm				4						
DN	16	16	16	25	25	40	40	50	50	50

Male panel connectors attached by flanges

Circulaire male panel connector	216 003 006	216 004 006	216 006 006	225 014 006	225 008 006	240 012 006	240 017 006	250 025 006	250 035 006	250 052 006
Protective cap for panel connector	536 910 006	536 910 006	536 910 006	536 911 006	536 911 006	536 911 006	536 912 006	536 913 006	536 914 006	536 914 006

The electrical connection is made using a cable connector from our „Standard“ or „Waterproof“ Series. Select the most appropriate type of cable connector to suit your operating conditions.




Standard Series – Female cable connector (see page 10)

Female cable connector	042 953 006	043 085 006	042 954 006	530 763 006	042 955 006	042 956 006	038 382 006	042 977 006	042 990 006	530 703 006
Type 3 cable clamp	630 135 006	630 135 006	630 135 006	630 138 006	630 138 006	630 138 006	630 155 006	630 155 006	630 175 006	630 175 006
Protective cap for female cable connector	532 260 006	532 260 006	532 260 006	532 278 006	532 278 006	532 278 006	532 262 006	532 263 006	532 264 006	532 264 006

Waterproof Series – Female cable connector (see page 22)

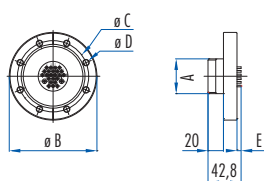
Female cable connector + cable clamp, small outlet	532 401 006	532 402 006	532 403 006		532 404 006	532 405 006	532 406 006	532 407 006	532 408 006	530 713 006
L Capacity of the cable clamp in mm	\varnothing 7 – 10	\varnothing 7 – 10	\varnothing 7 – 10		\varnothing 9 – 13	\varnothing 9 – 13	\varnothing 12,5 – 17	\varnothing 12,5 – 17	\varnothing 16 – 23	\varnothing 16 – 23
Female cable connector + cable clamp, large outlet	532 411 006	532 412 006	532 413 006	530 773 006	532 414 006	532 415 006	532 416 006	532 417 006	532 418 006	530 714 006
L Capacity of the cable clamp in mm	\varnothing 9 – 12	\varnothing 9 – 12	\varnothing 9 – 12		\varnothing 12,5 – 17	\varnothing 12,5 – 17	\varnothing 16 – 23	\varnothing 16 – 23	\varnothing 22 – 32	\varnothing 22 – 32
Protective cap for female cable connector	532 270 006	532 270 006	532 270 006	532 271 006	532 271 006	532 271 006	532 262 006	532 268 006	532 269 006	532 269 006

- The panel connectors can also be connected with the female cable connector from the Waterproof High-Performance PG Series, and the female cable connector from the Waterproof PG Series.
- Conductors attached by tin soldering. Select the type of soldering according to the operating temperature. Avoid thermal shocks during soldering.
- Other panel connectors with flanges of the ISO K or ISO F type are available by request. Consult our sales department.
- For assembly, wiring, panel connector installation and contact arrangement instructions, see: Technical guides.
- Other accessories, see: Accessories.

Technical Data		Standard Series	Waterproof Series
RoHS	Male panel connector	Female cable connector	Female cable connector
			
Male panel connector	attachment by bolts		
Cable connector		rectangular housing	circular housing
Locking		screw connection	
Protection	Depending on the associated cable connector	IP 50 to IP 54 with elastomer in the housing, flat-gasket for panel connector	IP 65 with flat-gasket for panel connector
Contacts	3 to 52 contacts ø 2 mm, ø 3 mm and / or ø 4 mm, non-removable solder contacts		
Max. current	7 A ø 2 mm – 12 A ø 3 mm – 20 A ø 4 mm		
Helium leak rate	< 10 ⁻⁹ Atm.cm ³ /sec		
Permissible constant pressure difference between the two surfaces	50 bars, maximum test pressure: 150 bars		
Contact resistance	< 4 mΩ ø 2 mm – < 3 mΩ ø 3 mm – < 1,5 mΩ ø 4 mm		
Insulation resistance	> 10000 MΩ		
Breakdown voltage between adjacent contacts	> 1500 Volts (RMS) at a pressure of ~ 100Pa (according to Paschen's law)		
Operating temperature	-50 °C to +125 °C (500 hours at +150 °C)		
Materials	316L stainless steel body, Dilver P contacts, sintered glass insulation between pins and body guaranteeing excellent mechanical resistance		
Max. cross-section of soldered conductors	1,34 mm ² ø 2 mm (16AWG) – 3,18 mm ² ø 3 mm (12AWG) – 5,26 mm ² ø 4 mm (10AWG)		

Dimensional Data (in accordance with NF E 29 – 724)

Panel connector



Housing	Number of Contacts	Male panel connector				
		A	ø B	ø C	ø D	E
1	3-4-6	M21	70	58,7	6,6	13
2	4-8-12	M27	70	58,7	6,6	13
3	17	T-39	70	58,7	6,6	13
4	25	T-45	114	92,1	8,4	17,5
5	35-52	T-52	114	92,1	8,4	17,5

Part Number

Housing	1	1	1	2	2	2	3	4	5	5
Number of Contacts	3	4	6	4	8	12	17	25	35	52
└ ∅ 2 mm	1	4	6		6	12	15	23	33	52
└ ∅ 3 mm	2				2		2	2	2	
└ ∅ 4 mm				4						
DN	40	40	40	40	40	40	40	63	63	63

Male panel connectors attached by bolts

Circular male panel connector	340 003 006	340 004 006	340 006 006	340 014 006	340 008 006	340 012 006	340 017 006	363 025 006	363 035 006	363 052 006
No. of attachment bolts (not supplied)	6	6	6	6	6	6	6	8	8	8
Protective cap for panel connector	536 910 006	536 910 006	536 910 006	536 911 006	536 911 006	536 911 006	536 912 006	536 913 006	536 914 006	536 914 006

The electrical connection is made using a cable connector from our „Standard“ or „Waterproof“ Series. Select the most appropriate type of cable connector to suit your operating conditions.



Standard Series – Female cable connector (see page 10)

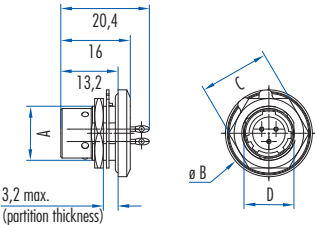
Female cable connector	042 953 006	043 085 006	042 954 006	530 763 006	042 955 006	042 956 006	038 382 006	042 977 006	042 990 006	530 703 006
Type 3 cable clamp	630 135 006	630 135 006	630 135 006	630 138 006	630 138 006	630 138 006	630 155 006	630 155 006	630 175 006	630 175 006
Protective cap for female cable connector	532 260 006	532 260 006	532 260 006	532 278 006	532 278 006	532 278 006	532 262 006	532 263 006	532 264 006	532 264 006

Waterproof Series – Female cable connector (see page 22)

Female cable connector + cable clamp, small outlet	532 401 006	532 402 006	532 403 006		532 404 006	532 405 006	532 406 006	532 407 006	532 408 006	530 713 006
└ Capacity of the cable clamp in mm	∅ 7 – 10	∅ 7 – 10	∅ 7 – 10		∅ 9 – 13	∅ 9 – 13	∅ 12,5 – 17	∅ 12,5 – 17	∅ 16 – 23	∅ 16 – 23
Female cable connector + cable clamp, large outlet	532 411 006	532 412 006	532 413 006	530 773 006	532 414 006	532 415 006	532 416 006	532 417 006	532 418 006	530 714 006
└ Capacity of the cable clamp in mm	∅ 9 – 12	∅ 9 – 12	∅ 9 – 12		∅ 12,5 – 17	∅ 12,5 – 17	∅ 16 – 23	∅ 16 – 23	∅ 22 – 32	∅ 22 – 32
Protective cap for female cable connector	532 270 006	532 270 006	532 270 006	532 271 006	532 271 006	532 271 006	532 262 006	532 268 006	532 269 006	532 269 006

- The panel connectors can also be connected with the female cable connector from the Waterproof High-Performance PG Series, and the female cable connector from the Waterproof PG Series.
- Conductors attached by tin soldering. Select the type of soldering according to the operating temperature. Avoid thermal shocks during soldering.
- For assembly, wiring, panel connector installation and contact arrangement instructions, see: Technical guides.
- Other accessories, see: Accessories.

Technical Data		Natto Miniature Push-Pull Series	
RoHS		Male panel connector	Female cable connector
Male panel connector			
Cable connector		attached by locknut	circular housing
Locking		Push-Pull, for very frequent locking and unlocking	
Protection			IP 65 with flat-gasket for panel connector
Contacts		3 to 7 contacts \varnothing 1 mm, non-removable solder contacts	3 to 7 contacts \varnothing 1 mm, removable solder or crimp contacts
Max. current		5 A \varnothing 1 mm	
Mechanical endurance		50000 locking and mating cycles	
Helium leak rate		$< 10^{-9}$ Atm.cm ³ /sec	
Permissible constant pressure difference between the two surfaces		50 bars, maximum test pressure: 150 bars	
Contact resistance		< 10 m Ω \varnothing 1 mm	
Insulation resistance		> 10000 M Ω	
Breakdown voltage between adjacent contacts		> 350 Volts (RMS)	
Operating temperature		-25 °C to +125 °C (500 hours at +150 °C)	-40 °C to +100 °C (500 hours at +125 °C)
Materials		Nickel-plated steel body, gold-plated Dilver P contacts, sintered glass insulation between pins and body guaranteeing excellent mechanical resistance	Nickel-plated light alloy, silver-plated brass contacts, PBT insert
Max. soldered conductor cross-section			0,93 mm ² \varnothing 1 mm (18AWG)

Dimensional Data					
Panel connector					
					
Housing	Number of Contacts	Male panel connector			
		\varnothing A	\varnothing B	\varnothing C	\varnothing D
00	3	M 12,5	20	16	11,6
0	7	M 16	23	19	15,1

Part Number

Housing	00	0
Number of Contacts σ 1 mm	3	7

Male panel connectors attached by bolts

Circular male panel connector	533 235 006	533 275 006
Protective cap for panel connector	533 610 006	533 650 006

The electrical connection is made using a cable connector from our „Natto Miniature Push-Pull“ Series. Select the most appropriate type of cable connector to suit your operating conditions.

Natto Miniature Push-Pull – Female cable connector (page 48)

Female cable connector	530 232 006	530 272 006
Cable clamp	530 331 006	530 371 006
Protective cap for female cable connector	536 620 006	536 660 006

- Conductors attached by tin soldering. Select the type of soldering according to the operating temperature. Avoid thermal shocks during soldering.
- For assembly, wiring, panel connector installation and contact arrangement instructions, see: Technical guides.
- Other accessories, see: Accessories.